



Brisbane Chamber and City of Brisbane Distribute \$200,000 to 34 Small Businesses

In 2021 the Brisbane City Council allocated \$200,000 of federal relief funds to support small businesses in Brisbane impacted by the COVID-19 pandemic. During the course of 2021 and 2022, the Brisbane Chamber, in partnership with the City, conducted two rounds of grant applications to determine eligible applicants. During the first grant round, businesses that were open prior to the pandemic could apply. These businesses had to demonstrate a 25% decline in revenues or profit in 2020 compared to 2019.

In the second grant round, the City Council adjusted the eligibility requirements to encourage more businesses to apply. The threshold of revenue loss in order to qualify dropped from 25% to 15%, and new businesses who signed leases for commercial properties in Brisbane in 2020 were also eligible to apply. The Council wanted to help support newly formed companies that experienced an even more difficult first year than businesses that started under normal circumstances.

The Chamber and the City disseminated information regarding the program using the signboards, *The Luminary*, Chamber email newsletter, City email newsletter, The STAR, passing out flyers to businesses, and calling them directly.

The Chamber hired MWoodruff Design, a female-owned Brisbane-based business, to develop the application portal. In addition, the Chamber hired Katherine Loh, another female-owned Brisbane-based company, to translate the application and flyers into Chinese, Tagalog, and Spanish.

Money was divided evenly among the applicants in both rounds. All applicants who met the requirements and submitted the necessary documents received a grant.

The 34 Brisbane businesses that received grants over the two rounds included: Carter Dow Photography, Ole Travel, R & H Repairs, KNECHTUS, James Fitzgerald DDS, Brisbane Laundromat, Na Na's Kitchen, Trigonis Construction, CocoTutti Chocolates, Round N Round Pot, Beauty Fix Studio, Jeffrey Co Consulting, ZA Restoration, YENZYM Antibodies, Green Spa, Jonie Uniforms, Brisbane Chiropractic, 7 Mile House, Pro Nails, R.S. Randall & Co, Rosedale Floral Design, Aloft Consulting, Travel Too, Salmon Construction, Couture Costume, Star City Salon, L & D Bistro, MoBowL, U.S. Surveillance Systems, Phil Marks Chocolates, Chef Reina, Saint Studio, Skin Body Zen, and Visual Prophets.

35% of these local businesses are female-owned, 55% are minority-owned, and one is LGBTQ-owned.

Thank you to the Brisbane Chamber for administering the grant process on behalf of the City and hearty congratulations to all the grant recipients!



Trash Talk: Back to School Waste Reduction Tips

Q: School's back in session. Any tips for reducing school-related waste?

A: Absolutely! As much as possible, embrace paperless/electronic communication. If you need binders and notebooks, choose some that are made of sturdy (and recyclable) paperboard instead of plastic. Stay clear of backpacks and supplies that are poorly made and won't last long. If you pack lunches, do so without any single-use disposables. Send your student to school with a reusable water bottle. Try not to buy juices, yogurts, and other items that come in non-recyclable and non-compostable packaging. Buy things like pretzels and trail mix in bulk. One large bag creates less waste than 12 small bags sold inside a box covered in shrink wrap.

Need to brush-up your sorting knowledge? Interested in more tips? Visit ssfscavenger.com/sort-smart today!

DID SOMEBODY SAY LUNCH?
Ozzy will eat what picky students reject!

I love raisins and carrots!

Ideally, school lunches are served in reusable containers and every bite is consumed. In reality, many lunches create trash.

Please make sure that food that doesn't make it into a hungry mouth doesn't go in the garbage either. Feed it to Ozzy!

Visit ssfscavenger.com/sort-smart for additional tips!

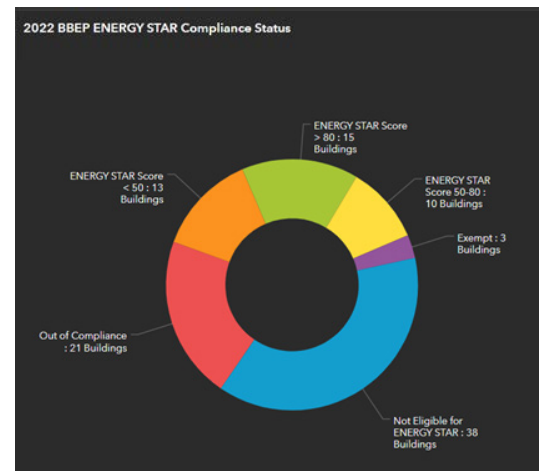
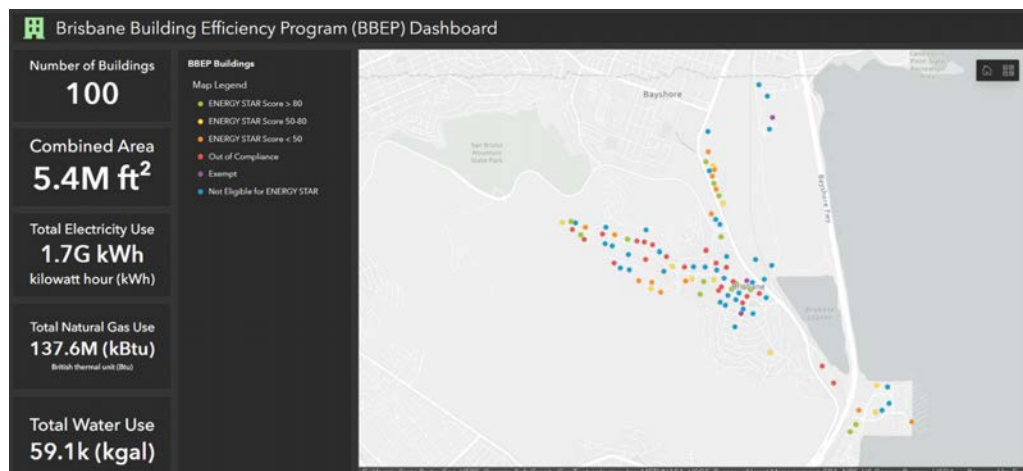
An important message from

SOUTH SAN FRANCISCO
SCAVENGER
COMPANY, INC.

Brisbane Building Efficiency Program (BBEP) Unveils Transparency Dashboard

In 2019, the City of Brisbane launched the Building Efficiency Program, which requires large commercial, industrial, and multi-family buildings to submit annual benchmarking reports of their energy and water usage. The purpose of this program is to help make buildings more efficient, thereby saving money, improving the safety and comfort of our building stock, and reducing emissions that are driving climate change.

The program also aims to provide data transparency to increase awareness about building performance among building tenants, buyers, and Brisbane residents and create demand for efficiency improvements. To that end, per the ordinance which established the program, a new ArcGIS map dashboard is now available on the City's website. The dashboard shows summary statistics on total energy and water consumption as well as information on individual buildings' compliance status and resource use. We encourage you to check it out for yourself, since there are many interactive features!



In the next phase of the program, buildings will need to demonstrate that they are highly efficient or begin taking steps to improve. These are called the "Beyond Benchmarking Requirements" and will go into effect next year (2023) for commercial buildings and the following year (2024) for industrial and multi-family buildings.

View the dashboard and learn more about the program and upcoming requirements at brisbaneca.org/bbep.

Brisbane Garden Show Recap

Last month, the Community Center was transformed into a gardener's showroom, where the best of Brisbane's gardens was on full display. This was the entrance that beckoned the public into the showroom...



See this year's top winners, who received \$25 and \$50 gift cards to a Brisbane Chamber of Commerce business of their choice:

\$25 WINNERS
 Tomato: Michele Salmon
 Fruit: Bhushan Bhandari

\$25 WINNERS
 Veggie: Leesa Greenlee
 Preserves: Shanna Calmes

\$25 WINNERS
 Flower Bloom: Melissa Vivas
 Flower Arrangement: Victoria Vargas

\$25 WINNERS
 Large Potted Plant: Melissa Vivas
 Medium Potted Plant: Karen Cunningham

\$25 WINNERS
 Small Potted Plant: Karen Latham
 Mini Potted Plant: Michelle Folawn

\$25 WINNERS
 Drought Tolerant: Karen Latham
 Youth: Mylene Bouchard

\$50 WINNERS
 Rare & Wonderful: John Greenlee
 Best Bloom: Melissa Vivas
 Best in Show: Karen Cunningham

As you can see, judges Madison, Julie, Sue, Shanna, and Leesa had their work cut out for them!



We thank everyone who entered this year's Garden Show. Next year's event will feature a springtime addition, so stay tuned, and keep those gardens growing!

Join in on the Mothers of Brisbane's

Halloween Costume Exchange



**DROP OFF & PICK UP USED HALLOWEEN
COSTUMES FOR YOUR LITTLE ONES!**

Suggested donation of \$5 for each costume picked up

**Stop by the MOB booth at Brisbane's Day in the Park
Saturday Oct 1st from 10 am - 3 pm**

Can't make the Day in the Park?

Contact carrillo.gaby@gmail.com to schedule a costume drop off.



October 2022 City Calendar

The City's **Meals for Seniors Lunch Program** takes place **Mondays** from **12-12:45pm** outside the Senior Sunrise Room (2 Visitation Ave.) for drive-thru/walk-up pickup.

The **Brisbane Farmers' Market** takes place **Thursdays** from **3-7pm** in the Community Park (5 Old County Road, Brisbane).

No-Cost COVID-19 Testing is available in the Community Park **Thursdays, 10am – 4pm**. Sign up at cur.tv/Brisbane. To get your results over the phone, please call 1-888-702-9042.

See brisbaneca.org/calendar for more information on all the following items.

Meeting Agendas may be viewed online at brisbaneca.org/meetings at least 24 hours prior to a Special Meeting, and at least 72 hours prior to a Regular Meeting.

9/15 - 10/15, National Hispanic Heritage Month
hispanicheritagemonth.gov

October is National Disability Employment Awareness Month
dol.gov/agencies/odep/initiatives/ndeam

October is National Bully Prevention Month
nationaltoday.com/national-bullying-prevention-month

01, Saturday, 8am – 3pm

Day in the Park & Brisbane Derby | brisbaneca.org/dip-derby

03, Wednesday, 6:30pm

Complete Streets Safety Committee Meeting, B

04-05, Tuesday Evening-Wednesday Evening

Yom Kippur | nationaltoday.com/yom-kippur

06, Thursday, 7:30pm

City Council Meeting, B

08, Saturday, 12-2pm

Underwater Pumpkin Patch | brisbaneca.org/pumpkin

10, Monday, All Day

City Hall Closed in Observance of Indigenous Peoples Day

12, Wednesday, 6:30pm

Parks and Recreation Commission Meeting, B

13, Thursday, 7:30pm

Planning Commission Meeting, B

19, Wednesday, 6pm

Inclusion, Diversity, Equity, and Accountability (IDEA) Committee Meeting

20, Thursday, 7:30pm

City Council Meeting, B

22, Saturday, 9am

Star City San Bruno Mountain Half Marathon | starcityhalfmarathon.wordpress.com

22, Saturday, 9am-12pm

Lions Flu Shot Clinic (Free) | Senior Sunrise Room

22, Saturday, 5-10pm

Parents Night Out | brisbaneca.org/PNO

22, Saturday, 6-8pm

That's Amore! Date Night Cooking Workshop | brisbaneca.org/active

26, Wednesday, 5:30pm

HOWL-O-WEEN Dog Costume "Pawty"

26, Wednesday, 6:30pm

Open Space and Ecology Committee Meeting, B

27, Thursday, 7:30pm

Planning Commission Meeting, B

B = broadcast live on Ch. 27 and YouTube

City Hall Walk-In Service Hours – 3 days/week: M: 9am – 4pm, W: 9am-7pm, Th: 9am – 4pm. Please see all services that can be conducted remotely at brisbaneca.org/online-services.

Do you have questions about the STAR or have an article to suggest? Articles are due by the 15th of each month. Contact Caroline Cheung at ccheung@brisbaneca.org or (415) 508-2157.

Annual Winter Clean Up and Tree Trimming

Our **Annual Winter Clean Up Weekend is November 4 & 5** this year. This is the time to clear your property of fallen leaves and branches which could find their way into one of the City's storm drains and cause flooding during the rainy season. Dumpsters will be placed throughout town for residents to dispose of their yard waste.



Please remember that this is for **yard waste only** (leaves, branches, grass). No garbage bags or other waste is to be disposed of in these dumpsters. The Public Works team will have a limited crew available to help residents get their waste to the dumpsters. You can leave a message for them at (415) 508-2147.

A tree removal permit is required for removal, or severe trimming (removal of 50% of the foliage crown or removal of 30% of the height of the tree). See if you need a permit at brisbaneca.org/tree-removal-landscaping or by calling (415) 508-2120.

Please do not attempt to trim tree branches that are touching or near PG&E power lines. Call PG&E if you have any questions or concerns at (800) 743-5000.

Housing Element Moves on to City Council!

The City Council will review the draft 2023-2031 Housing Element and hold a remote public hearing on **October 6th at 7:30pm**. Council's review is the final step before the draft Element is submitted to the California Department of Housing and Community Development (HCD) for review. Once the draft is submitted, HCD will have 90 days to review the draft and provide comments to the City to address in a revised draft of the Element. Then, following HCD's review, City Council will consider any necessary revisions to the draft Element at a future public hearing, likely in February 2023.



How can I comment on the Draft Housing Element?

While the formal 30-day comment period on the draft Housing Element closed on September 9th, Council will still take public input as long as it's a draft. Please use the Community Development Department's Contact Form at brisbaneca.org/CD-Contact-Form to submit a comment, or mail your comments to: Community Development Department, City of Brisbane, 50 Park Place, Brisbane, CA 94005

You may also submit a comment to the City Clerk ahead of the October 6 public hearing as described on the meeting agenda, which will be published at brisbaneca.org/meetings on Friday, September 30th. We hope you stay engaged as we move through the process of adopting the 2023-2031 Housing Element this spring!

A Blueprint for the City's Housing Decisions

We've covered the Housing Element basics in previous STAR articles (see December 2021-September 2022 STAR issues). As a refresher, the draft 2023-2031 Housing Element establishes the City's goals, policies, and programs to help address our current and future housing needs, protect vulnerable residents from displacement, and preserve existing affordable housing. The California Government Code states: "The availability of housing is a matter of vital statewide importance and the early attainment of decent housing and a suitable living environment for every Californian...is a priority of the highest order". For a comprehensive overview of the Housing Element update process, including links to prior public meetings and workshops, and to sign up for notifications of Housing Element updates and public meetings, visit brisbaneca.org/housingelementupdate.

November 8th General Election

The November ballot includes the election of two Councilmembers for terms of four years each, as well as two ballot measures - Measure O, a Business License Tax on hotels, and Measure U, a half-cent Transaction and Use Sales Tax.



The candidate filing period for write-in candidates began on September 12, 2022 and closes on October 25, 2022 at 5pm. Write-in candidates must file a statement of write-in candidacy and other required documentation with the City Clerk. City candidates must file their paperwork with the City Clerk's office at 50 Park Place, Brisbane, CA 94005 or via email at cityclerk@brisbaneca.org by appointment during posted business hours. Call (415) 508-2113 for more information.

See more about the upcoming General Election at: brisbaneca.org/2022election.

bdw presents

HALLOWEEN GARDEN FUN

BOO!
BDW IS UP TO
SOMETHING NEW!

COME JOIN US FOR A SPOOKY
TIME AT THE COMMUNITY CENTER'S GARDEN
MONDAY 10/31 4PM-7PM





Providing for Today,
Preparing for Tomorrow

Presorted Standard
U.S. Postage Paid
San Francisco, CA
Permit No. 43

*****ECRWSS EDDM**
POSTAL CUSTOMERS
BRISBANE, CA 94005

Unity starts in the community

CELEBRATE HISPANIC HERITAGE MONTH TOGETHER

Help a family member, a friend or a neighbor get vaccinated for a safe and fun celebration. Visit myturn.ca.gov or call 1 (833) 422-4255 to schedule a COVID-19 vaccine or booster.

Vaccinate ALL 58

La unidad comienza en la comunidad

CELEBREMOS JUNTOS EL MES DE LA HERENCIA HISPANA

Ayuda a un familiar, amigo o vecino a vacunarse para disfrutar de una celebración segura y divertida. Visita myturn.ca.gov o llama al 1 (833) 422-4255 para programar una vacuna o dosis de refuerzo contra el COVID-19.

Vaccinate ALL 58



PLAY GYM

BABY, TODDLER, AND PRESCHOOLER PLAY GROUP

AGES:
0-5
Infants under 6m free!

ADMISSION
Costs are per child

Season Pass: \$36
(9 sessions total)

Drop Ins: \$5

*Siblings get 50% off; Additional costs for non Brisbane residents

Saturdays 9:30 am - 10:45 am
Free admission if you help set up at 9:15 am and close at 10:45 am

Fall 2022 Dates: Aug 20th | Sept 10th & 24th | Oct 8th & 22nd
Nov 5th & 19th | Dec 3rd & 17th

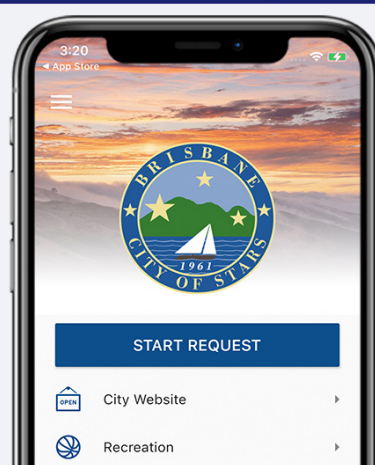
Brisbane Community Center
250 Visitation Ave.

For more details contact:
mobplaygym@gmail.com or 415-316-3796

Sign up online @ www.brisbaneca.org/playgym

City Hall in the palm of your hand

Download My Brisbane



- Access Information
- Submit Service Requests
- Receive Notifications
- And more...



Powered by GOGov