



Guadalupe Quarry Annexation and General Plan/Zoning Amendment Project Draft EIR Scoping Session

City of Brisbane

June 30, 2022



Presentation Overview

- Purpose of Scoping Session
- Proposed Project Overview
- California Environmental Quality Act (CEQA) Overview
- Topics to be Addressed in the EIR
- EIR Procedural Steps and Public Input Opportunities
- Important Scoping Dates
- Public Comment

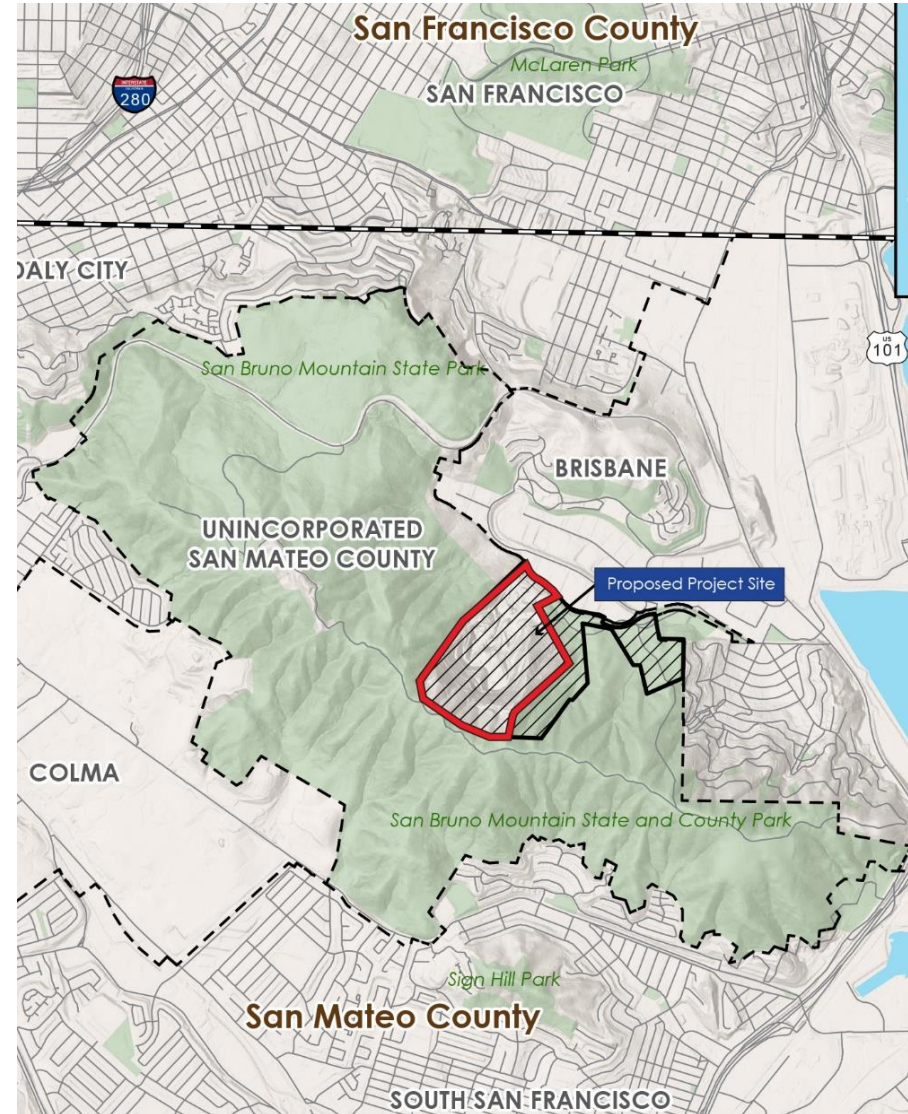
Purpose of Scoping

Receive comments from the public and agencies regarding the scope of the environmental document to be prepared for the project, including:

- Key environmental issues of concern
- Potential mitigation measures
- Potential alternatives for consideration

Existing Project Site

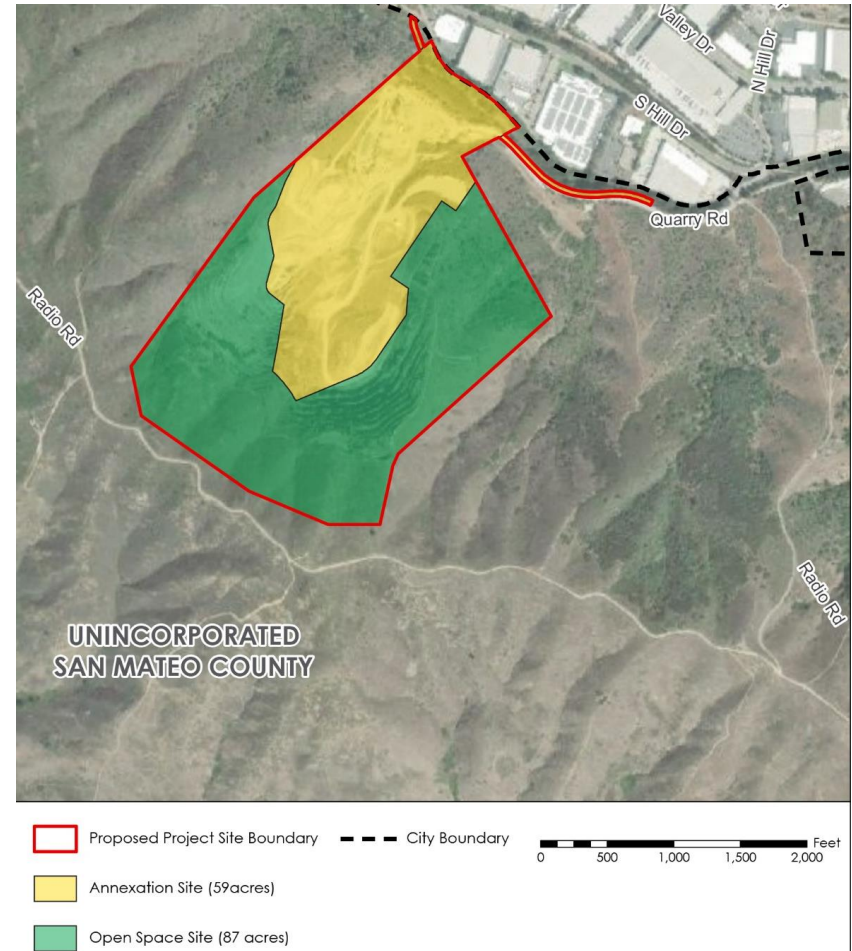
- Unincorporated San Mateo County, encompasses existing Guadalupe Quarry
- 146 acres
 - 59-acres of active quarry
 - 87-acres of undeveloped hillside land
- County General Plan designation Heavy Industrial and Open Space
- County Zoning classification Heavy Industrial (M-2)



Proposed Project Overview

Annexation of approximately 59-acres into the City's limits and amendments to the City's General Plan and Zoning Code for the 59-acre annexation site

- Closure of Guadalupe Quarry and site reclamation
- General Plan land use designation to Trade Commercial
- Creation of a new Zoning District
- Zoning District would allow a range of light industrial and warehousing/distribution uses
 - up to 326,373 square feet of last-mile delivery uses, *or*
 - up to 1,305,493 square feet of light industrial and warehousing/distribution uses
- Design permit required for any future development project



CEQA Overview

As a State law, CEQA mandates that lead agencies identify and disclose the significant environmental effects of projects or plans under their jurisdiction and either:

- Avoid significant environmental effects, where feasible; or
- Mitigate significant environmental effects, where feasible

As lead agency, the City has determined that an Environmental Impact Report is the appropriate CEQA document to evaluate the potential effects of the project

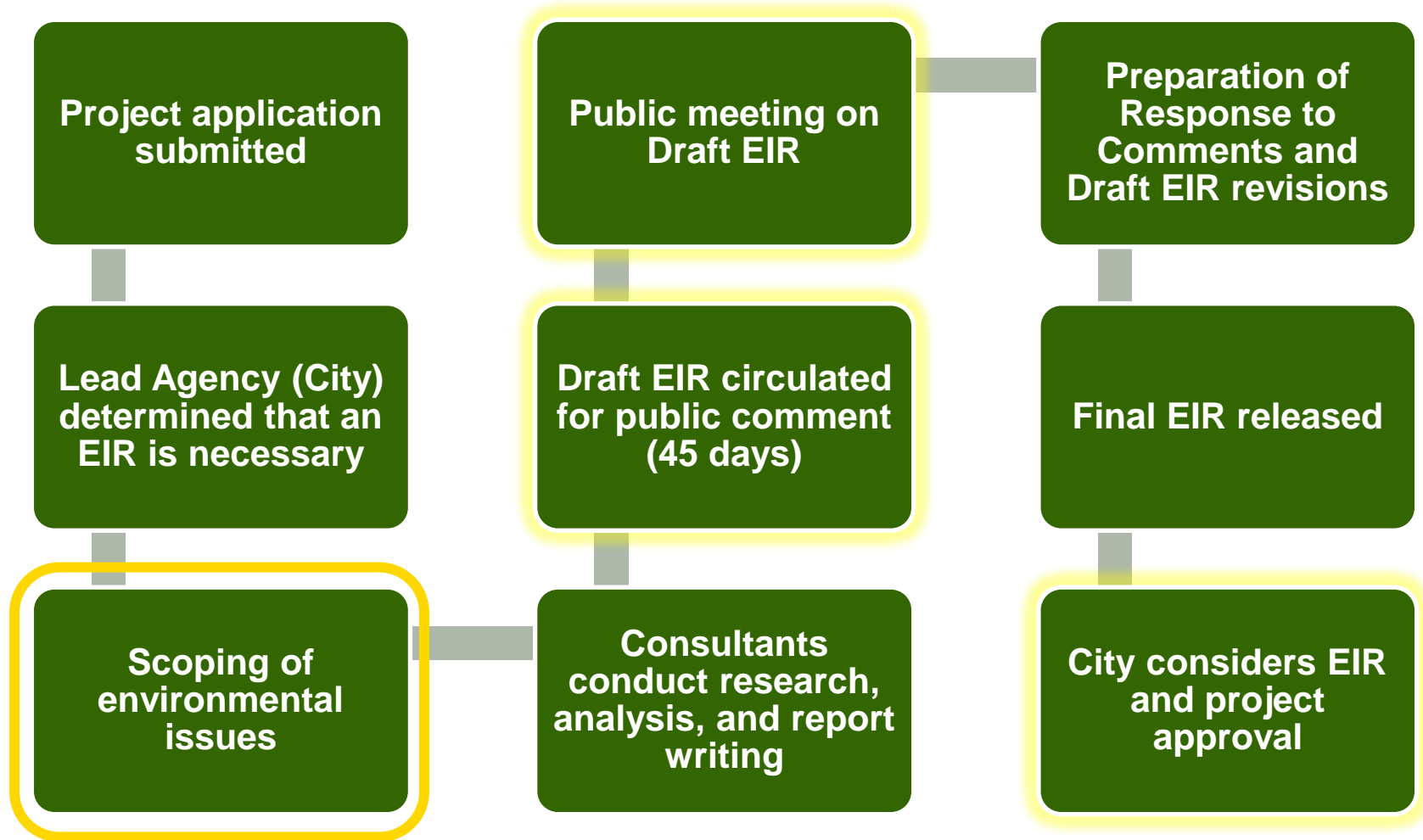
CEQA Overview – Evaluation Process

- Identify baseline (existing) and cumulative environmental conditions
- Define significance threshold for each topic
- Conduct impact analysis to measure the change between baseline conditions and conditions during and after implementation and how it related to the significance threshold
 - Impacts are direct or indirect physical changes in the environment
 - Economic and social changes are not physical

Topics to be Addressed in the EIR

Land Use and Planning	Mineral Resources	Geology, Soils, and Seismicity	Hazards and Hazardous Materials
Hydrology and Water Quality	Biological Resources	Air Quality	Greenhouse Gas Emissions
Transportation and Circulation	Utilities and Service Systems	Aesthetics	Cultural and Tribal Resources
Noise and Vibration	Public Services	Wildfire	Recreation
Energy	Population and Housing	Agriculture and Forestry	Alternatives

EIR Procedure Steps and Public Input Opportunities



Important Scoping Dates

Scoping Milestone	Date
Publication of Notice of Preparation (NOP)	June 16, 2022
Draft EIR Scoping Session	June 30, 2022
End of 30-day NOP Comment Period	July 18, 2022

Written comments will be accepted until
Monday, July 18, 2022, 5:00 p.m.

Public Comment

- Comments can be made on the NOP during this Scoping Meeting tonight by:
 - Zoom.us (please use the latest version: zoom.us/download)
 - Webinar ID: 970 0458 3387
 - Passcode: 215153
 - Raise hand feature with Host
 - Call In Number: 1 (669) 900-9128
 - *9 to Raise Hand and *6 to Unmute

Public Comment

Written comments on the scope of the Draft EIR can be submitted until **Monday, July 18, 2022, before 5:00 p.m.**

to:

Kelly Beggs, Consulting Planner

City of Brisbane

50 Park Place

Brisbane, CA 94005

kbeggs@brisbaneca.org

Project information is available on the Project website:

<https://www.brisbaneca.org/cd/project/guadalupe-quarry-general-plan-and-zoning-amendment-project>